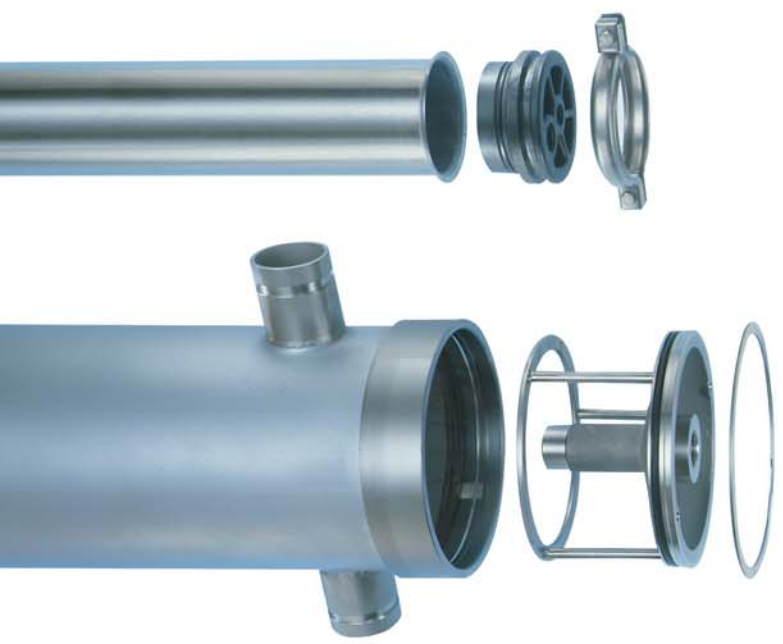




OVERVIEW

# OSMO HOUSINGS

QUALITY STAINLESS STEEL



# Stainless Integrity

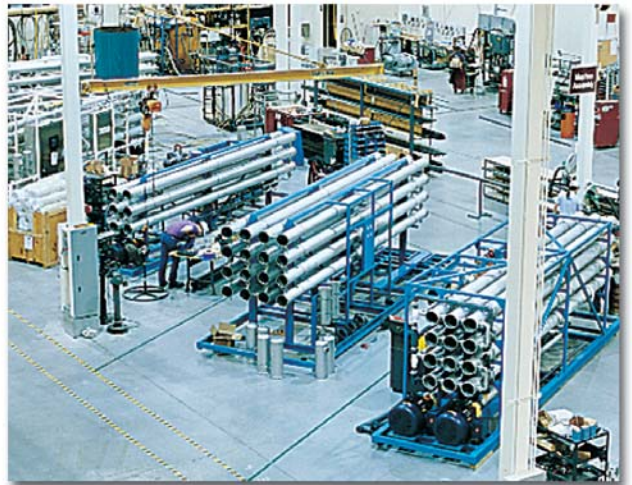
A membrane element housing is more than a piece of process pipe. Osmo® stainless steel housings are precision engineered to improve the overall design and performance of your system. To achieve accurate dimensions and precise tolerances, we use stainless steel tubing formed with proprietary rolls and dies. These uniform dimensions eliminate flow by-pass and ensure a tighter membrane element seal. Membrane elements stay in place, without buckling, twisting or leaking.

Whether your application requires a low-pressure process or a sanitary alternative, our host of options make it easy for you to find the perfect housing for your system or machine.

## Choose from:

- 4 housing diameters**
- 3 end-cap variations**
- Multiple entry-port options**
- 3 housing finishes**

Osmonics has come a long way since pioneering reverse osmosis (RO) technology back in 1969. Osmonics is now leading the commercialization of RO technology to simplify system design, improve durability, and speed of delivery.



## Why Stainless Steel?

- No seals involved in side port connections
- Can withstand high temperatures, up to 190° F (90° C)
- Capable of supporting process piping
- During assembly, stainless housings are lighter and easier to handle than PVC and FRP housings with equivalent pressure ratings
- Unlike fiberglass, doesn't warp, crack or weep
- Is not affected by UV rays or sunlight
- Stainless steel is a preferred and universally accepted material for water systems



## Why Osmonics?

- ISO 9001 certified manufacture
- Most energy efficient designs
- 30+ years experience in the water treatment industry
- Continuing innovation in housing designs
- Single source accountability—we manufacture all of the major components of an RO system
- Regional service available worldwide 24/7/365
- Delivery in 1–4 weeks


# 8-Inch Option List

Choose from our 8-inch housing menu, offering a variety of materials, ports and finishes.

## 1 Grade

- 304L Stainless Steel
- 316L Stainless Steel

## 2 Side Ports

- 2-inch port (standard)
- 3-inch port (optional) 
- Multi-port (2–8 ports)
- Tri-clamp (standard is Victaulic)



Top: 2-inch port

Bottom: 3-inch port

## 3 Finishes

- **Mill** for a steel factory original finish (standard)
- **Painted** with acrylic polyurethane paint in most colors (i.e., bright aluminum)
- **Electropolished** for a glossy, shiny, metallic look



Mill Finish



Painted Finish



Electropolished

## 4 End caps

- Low-Energy, (LE) made with Noryl\*
- High-Pressure made with 316 stainless steel
- Sanitary made with polished 316 stainless steel



Low-Energy (LE)



High-Pressure



Sanitary

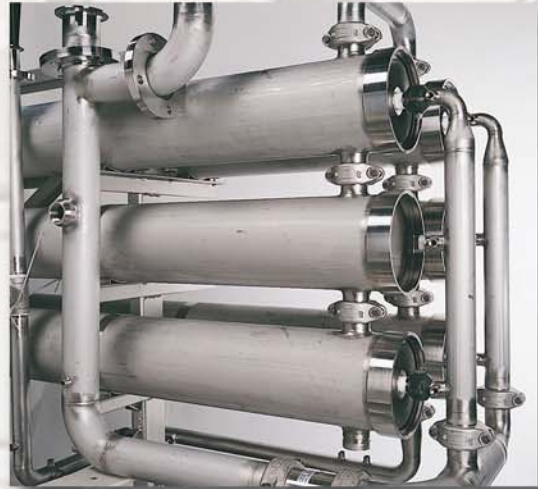
Osmo housings are engineered with your element in mind. End cap adapters are available for all membrane element brands, including Desal<sup>®</sup>, Osmo<sup>®</sup>, Fastek<sup>™</sup>, Hydranautics<sup>\*\*</sup>, FILMTEC<sup>\*\*\*</sup> and elements manufactured by Koch Membrane Systems and FilmTec Corporation.

\*Noryl is a registered trademark of General Electric Company.

\*\*Hydranautics is a registered trademark of Hydranautics Corporation.

\*\*\*FILMTEC is a registered trademark of FilmTec Corporation.

# Product Families



Mill Finish



Painted Finish

Housing Model	Feed Port Style	Pressure Rating	Housing Lengths	Housing Material	Feed Port Connections	Feed Port Connections	Closure Design	Endcap Material	Permeate Port Connections
<b>80</b> (8 Inch)	Side-Entry (2 or 4 port)	300 psi 450 psi 600 psi	1 — 7 element (40'') long	304L SS 316L SS	2 inch 3 inch	Victaulic Tri-Clamp	Retaining Ring	GFN 316 SS	Threaded Tri-Clamp
<b>40</b> (4 Inch)	Side-Entry (2 or 4 port)	500 psi 1000 psi	1 — 6 element (40'') long	304L SS 316L SS	<sup>3</sup> / <sub>4</sub> inch 1 <sup>1</sup> / <sub>4</sub> inch 1 <sup>1</sup> / <sub>2</sub> inch	Victaulic Tri-Clamp Threaded	Victaulic Tri-Clamp	GFN 316 SS	Threaded Victaulic Tri-Clamp
<b>40</b> (4 Inch)	End-Entry	300 psi	14 — 180 inch	304L SS	<sup>3</sup> / <sub>4</sub> inch	Threaded	Half-Clamp	GFN	Threaded
<b>25</b> (2.5 Inch)	End-Entry	300 psi	14 — 40 inch	304L SS	<sup>3</sup> / <sub>8</sub> inch	Threaded	Half-Clamp	GFN	Threaded
<b>20</b> (2 Inch)	End-Entry	300 psi	14 — 40 inch	304L SS	<sup>3</sup> / <sub>8</sub> inch	Threaded	Half-Clamp	GFN	Threaded

# Assuring Quality

All Osmo housing designs are quality certified. Each design is qualified by rapidly simulating their performance in a membrane system. Each housing design has been cycle-tested from 0 to their rated design pressure over an expected life of the housing (minimum of 100,000 cycles), as well as a hydrostatic tested to 1.3 times their design pressure. (Our Noryl endcaps are pressure tested to three times the rated operating pressure.)

All Osmo housings are built in our ISO 9001 certified manufacturing facility.

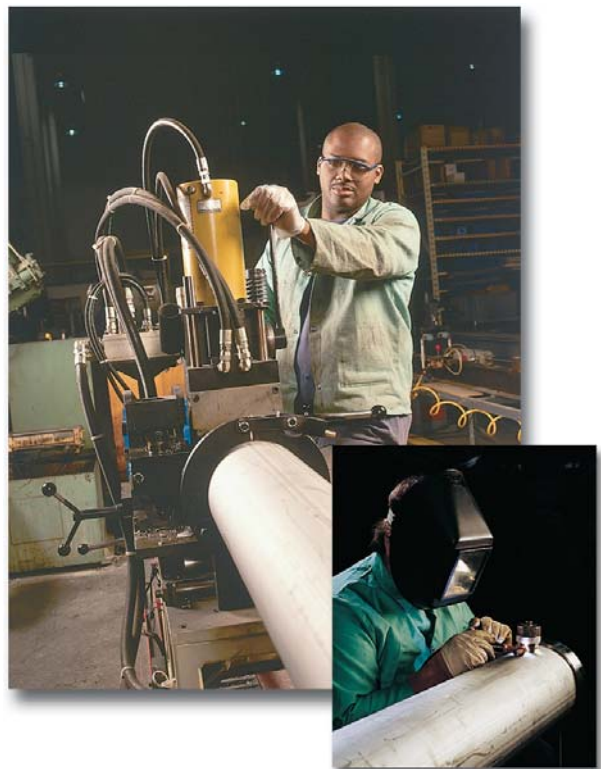
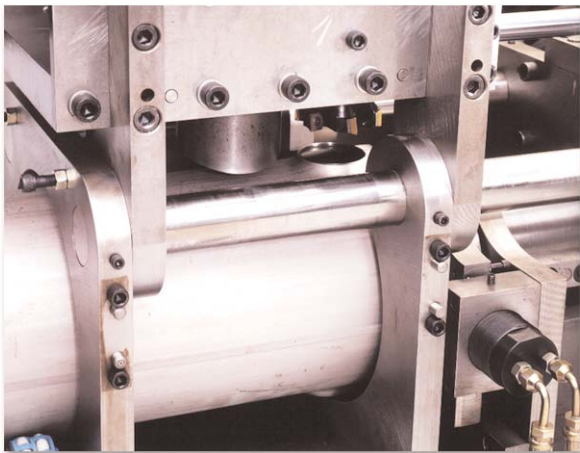


# Precision Manufacturing

You can see the craftsmanship in an Osmo housing just by looking at it. Each component is precision machined on CNC equipment. Large feed and concentrate side ports are cold-formed and welded for maximum performance. The result is the strongest side ports in the industry. No need for o-ring seals and the potential problems that can result. Our pulled-port design insures a quality circular weld on every side port.

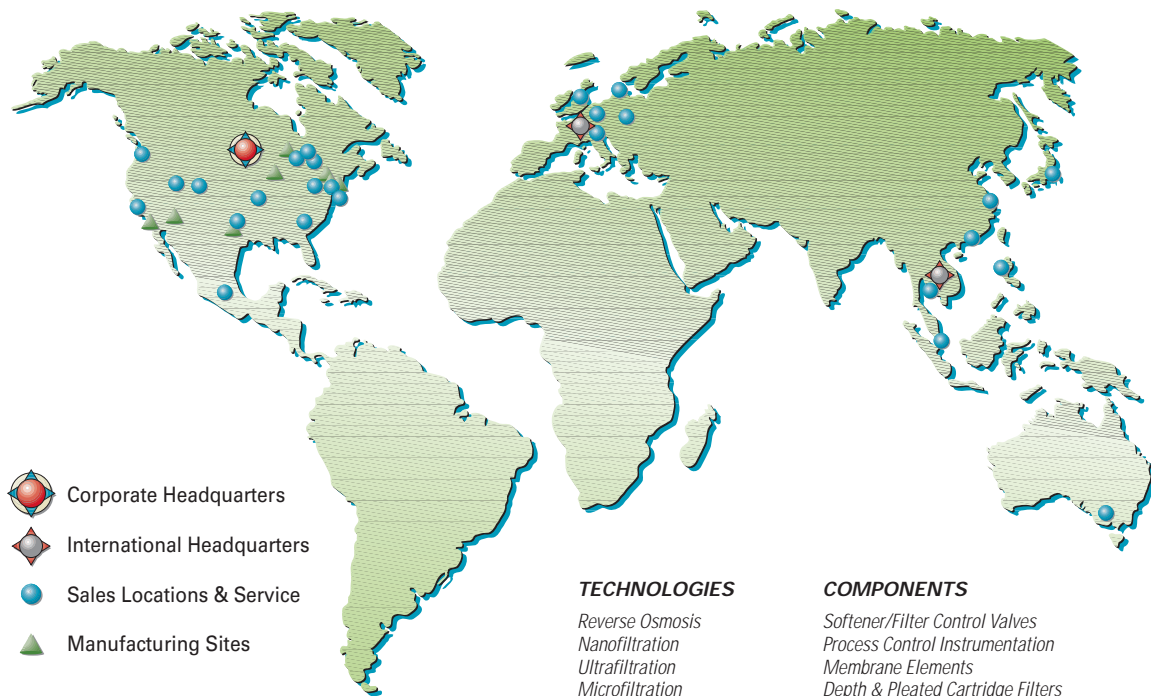
# Technical Expertise





To help integrate Osmo housings into your membrane system we provide, upon request, CAD drawings electronically. Detailed technical information is available from individual product bulletins and assembly guides. Knowledgeable application engineers can answer component integration questions. Detailed pressure drop and flow characteristics are also available. For technical support, call (800) 766-2599.





# Fluid Solutions for a World of Applications



-  Corporate Headquarters
-  International Headquarters
-  Sales Locations & Service
-  Manufacturing Sites

#### TECHNOLOGIES

Reverse Osmosis  
Nanofiltration  
Ultrafiltration  
Microfiltration  
Ion Exchange  
Media Filtration  
Membrane Clarification  
Ozonation  
Electrodeionization

#### COMPONENTS

Softener/Filter Control Valves  
Process Control Instrumentation  
Membrane Elements  
Depth & Pleated Cartridge Filters  
Centrifugal Pumps  
Laboratory Products  
Filters & Element Housings  
Reverse Osmosis Kits  
Membrane Equipment Skids

#### For More Information:

Call **Osmonics Process Water Group** at **(952) 933-2277** or **(800) 766-2599**, or visit **[www.osmonics.com](http://www.osmonics.com)**



## OSMONICS



#### North American Sales

5951 Clearwater Drive  
Minnetonka, MN  
55343-8995  
USA  
(952) 933-2277 Phone  
(952) 933-0141 Fax

#### Euro/Africa Sales

230 rue Robert Schuman  
ZA des Uselles  
F-77350 Le Mée sur Seine  
FRANCE  
+33 1 64 10 2000 Phone  
+33 1 64 10 3747 Fax

#### Asia/Pacific Sales

1044/8 SOI 44/2  
Sukhumvit Road Prakanong  
Bangkok 10110  
THAILAND  
+66 2 38 14213 Phone  
+66 2 39 18183 Fax